




Shapoorji Pallonji
Real Estate



VANAHA
VERDANT



**LEAVE THE NOISE BEHIND.
LIVE THE ESCAPE,
BENEATH THE SAHYADRI HILLS.**

At Vanaha Verdant, this isn't just a home — it's a quiet refusal. A life beyond the deadlines, the timelines, the city grid. Here, your every day opens into green, into space, into self — all under the timeless gaze of the Sahyadri hills. This is where you slow down, look up, and finally breathe.

Live the escape. Live Verdant.



AI generated image

**THE RETREAT IS REAL.
THE RETURNS ARE TOO.**

At Vanaha Verdant, every moment and every square foot gives back. Nature gives you peace. Planning gives you space. Location gives you access. And the future gives you promise.

THE HILLS STAND STILL. THE WORLD MOVES CLOSER.

Vanaha Verdant rises from the heart of Bavdhan - a location that blends natural stillness with urban connection.

Rooted within a flourishing township and cradled by expansive greens, it offers a life that feels far removed, yet effortlessly accessible. With forest trails, open views, and premier institutions close by, it's a retreat that remains remarkably reachable.



Part of a Thriving Township

All the essentials of community life already built, already functioning.



5 Minutes from Oxford Golf Course

Your personal green getaway is just a chip and a putt away.



Next Door to Flame University

Where knowledge, culture, and a vibrant campus life meet your backyard.



400+ Species of Flora & Fauna

Nature thrives here - with every step, a new species to spot.



THE PLAN IS THOUGHTFUL. THE LIFE IS EFFORTLESS.

Shapoorji Pallonji Real Estate presents Vanaha Verdant - a community where smart planning meets green thinking. Designed to elevate everyday living while holding long-term value.



Spread across 4.7 acres
(~19,020 sq.m.)



Designed for openness,
natural light
and cross-ventilation

The design is intuitive. The difference is immediate.

Vanaha Verdant is not just a place to live - it's a way to grow. From green experiences to intuitive design, every detail here has been chosen to enhance the way you live today, and what you'll value tomorrow.



Nature-First Design Ethos

- Breeze Bay and a nature pond within the masterplan
- Integrated natural living - not as a backdrop, but as a lifestyle



Spacious, Vaastu-Compliant Homes

- No south-entry apartments
- Efficient kitchen designs (L-shape + parallel)
- Wider dining zones and reduced passage wastage



An Integrated Lifestyle

- Low-density project for more space and privacy
- 1.43 acre (~5,787 sq.m.) open garden within the cluster
- Covered badminton and squash courts
- Retail block within walking distance
- Seamlessly connected to Vanaha's larger township ecosystem-schools, internal roads, open spaces, and convenience retail



Forest Garden

At the centre of the community, the Forest Garden is a sanctuary of stillness and shade - a place where time slows, and nature takes over. Thoughtfully designed to offer every home a view of immersive greenery, especially the inward-facing ones, it brings the calm of the forest into everyday life.

AI generated image



Where Every Corner Expands Into Calm.

At Vanaha Verdant, the walls don't close in, they breathe. Light pours in through generous windows. Air flows freely, through rooms designed to exhale.

No wasted corners. Only space that welcomes you back. Spacious kitchens. Calmer corners. Thoughtful, Vaastu-aligned layouts that feel just right.

Choose from well-planned 2 & 3 BHK residences, each one a quiet retreat, where the forest is always near.

Because this isn't just a place to live. It's where your life gets lighter.



Artist's Impression


True Luxury Lives Lightly.



Where Leisure is a Daily Ritual.



Artist's Impression



The lifestyle
invites play.
The spaces
return peace.

At Verdant, wellness,
wonder, and warmth come together in
green, open spaces made for joy.



Space for Spa & Salon

Jogging Track

Tennis Court

Swimming Pool

Badminton Court

Basketball Court





The project is in the vicinity of Oxford Golf Course and is operated by Oxford Golf Resorts Private Limited and not by Image Realty LLP.

Stock image



Stock image



Stock image

Yoga Deck

Senior Citizens' Zone

Squash Court

Indoor Games Room

Golf putting greens

Gym



Stock image

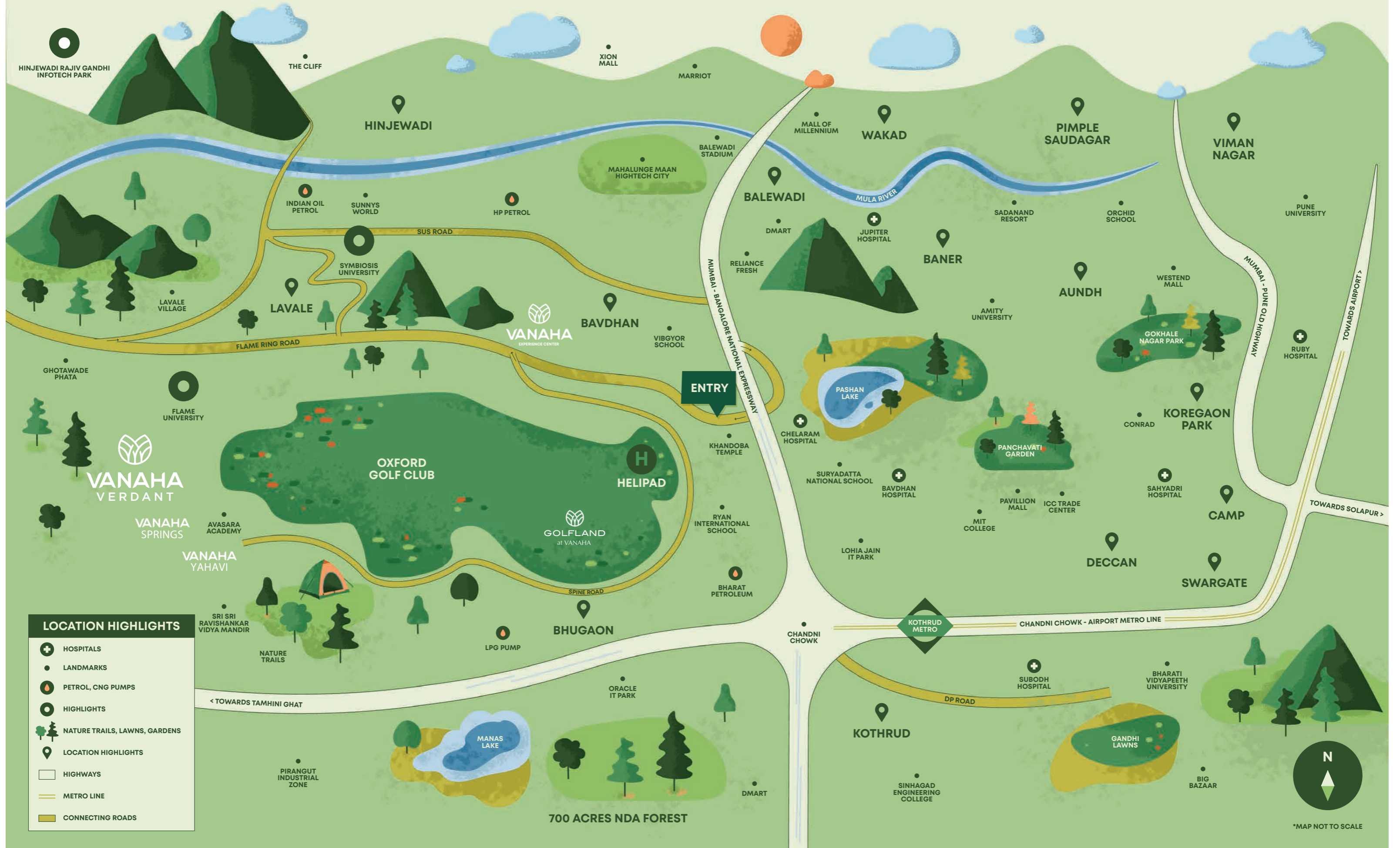


Stock image



Stock image

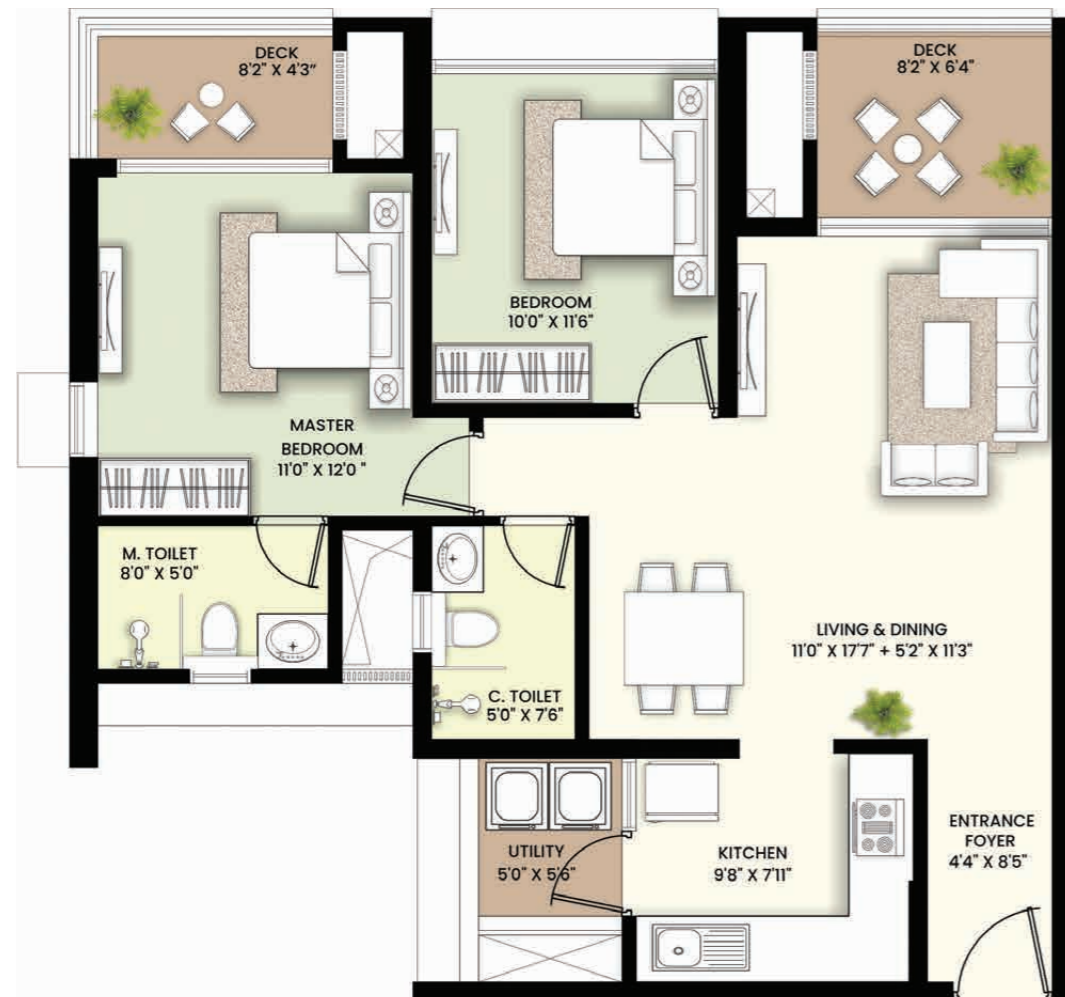
The world stays near. The calm stays closer.



UNIT PLAN
2 BED
 WITH 2 DECKS

Space That Breathes. Plans That Flow.

UNIT PLAN
3 BED
 WITH 3 DECKS



	Rera Carpet Area	Utility Area	Deck Carpet Area	Total Area
Sq.m.	70.57	2.55	8.06	81.18
Sq.ft.	760	27	87	874



	Rera Carpet Area	Utility Area	Deck Carpet Area	Total Area
Sq.m.	93.42	2.59	12.76	108.77
Sq.ft.	1006	28	137	1171



The name
is legendary.
The promise
is personal.

The Shapoorji Pallonji Group

A name trusted across generations.

With 15 companies across six major sectors

- including Engineering & Construction, Infrastructure,

Real Estate, Water, Energy, and Financial Services

- the group has shaped some of the world's most
iconic developments.

Shapoorji Pallonji Real Estate

For over 160 years, we've created landmarks
that outlive trends and outlast time. We build with
purpose, precision, and pride - transforming spaces
into legacies.

- Global presence in **40+** countries
- Presence across **9** Indian cities
- **95** million sq. ft. of planned development
- **30** landmark projects completed and ongoing



Business Bay, Dubai



The Imperial, Mumbai



Chenab Bridge, Jammu & Kashmir

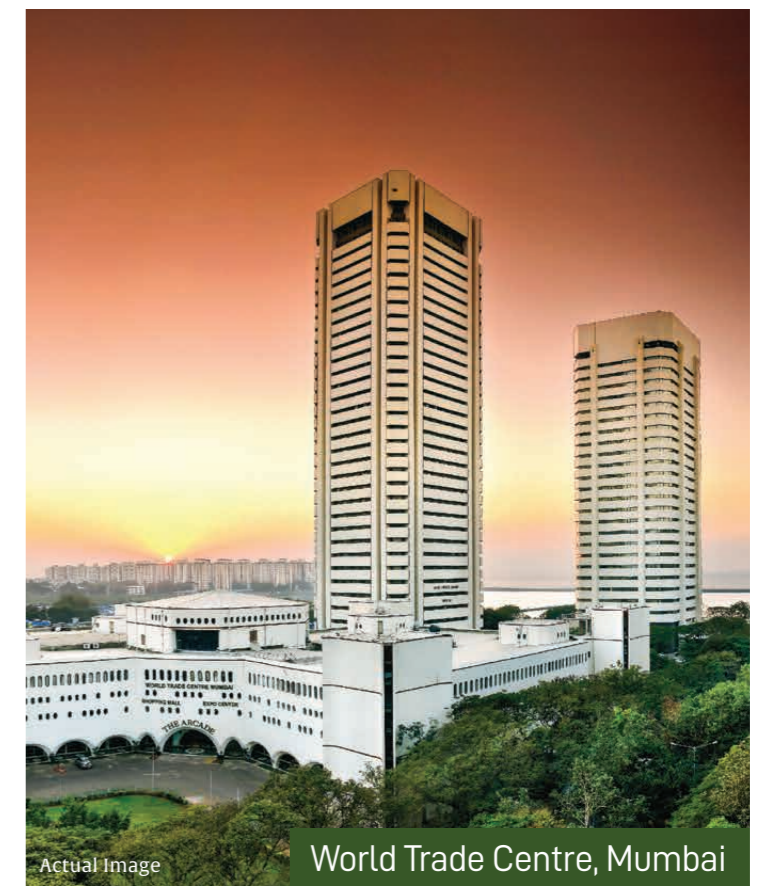


BAPS Hindu Mandir, Abu Dhabi



The Palace of the Sultan of Oman, Muscat

O U R L E G A C Y



World Trade Centre, Mumbai

MahaRERA number for Vanaha Verdant: Mahogany I & II - PR1260002500246
For details visit <https://maharera.maharashtra.gov.in/>



This material does not constitute an offer and/or contract of any type. Any prospective sale shall be governed by the terms and conditions of the Agreement for Sale to be entered into between the parties. Before making a decision to purchase, customers are requested to independently, either directly or through customers' legal/financial advisors, thoroughly verify all details/documents pertaining to the projects. The places shown in some images are fictitious and are created by Generative Artificial Intelligence (AI) tools. AI generated art is created autonomously by artificial intelligence without creative contribution from humans. Products, features, equipment, furniture, furnishings, light fittings etc. shown in the render are illustrations for reference only and are not part of the flat to be sold to the customers. Images are digitally enhanced, unless otherwise mentioned. No photos have been shot at site unless mentioned otherwise. The colours, shades of walls, tiles etc. shown in the images are for the purpose of representation. Views may not be perpetual. The project is in the vicinity of Oxford Golf Course and is operated by Oxford Golf Resorts Private Limited and not by Image Realty LLP. Membership rules and regulations will be governed by Oxford Golf And Resorts Pvt Ltd. Please note, Vanaha will be developed in a phased manner by the promoter Image Realty LLP (A joint venture entity of Shapoorji Pallonji Group) and hence a few of the common amenities and facilities, will be completed along with the completion of all phases in the development, subject to approval from the relevant authorities. The project is mortgaged to IDBI Trusteeship Services Limited as the Common Security Trustee for the benefit of the Debenture Holders and Motilal Oswal Home Finance Limited. The NOC/permission of the Common Security Trustee will be provided for the sale of flats/units if required. Other terms and conditions apply. Visit official website : <https://shapoorjirealestate.com/> for more details.